

HUTCHIES' TRUTH

A QUARTERLY NEWSLETTER FOR HUTCHINSON BUILDERS

AUGUST 2009

Stellar achievement with six star rating

HUTCHIES has become a national champion of green building in Australia with one of its latest projects, Santos Place (formerly known as Northbridge), being awarded a six star Green Star office design rating by the Green Building Council of Australia (GBCA).

Joe Karten, GBCA technical coordinator, said a six star rating was the highest achievable and represented World Leadership status.

The project was awarded 81 points – well above the 75 points required to achieve a six star rating – acknowledging Hutchies as an industry leader in sustainable design and construction.

Santos Place is unique, with no other commercial tower in Australia equaling the project's sustainable design elements and innovative qualities. It has become the largest commercial office tower in Australia to achieve the 6 star rating.

Santos Place is a 36-level commercial office building with a high performance façade, providing excellent shading and glazing characteristics to increase internal space energy efficiency.

A large floor plate allows extensive external views and adaptable tenant fit-outs.

Design features have either reduced the direct environmental impact of the building during the construction phase, or, will enable the building to perform at peak efficiency during its life cycle.

Initiatives will reduce the ongoing carbon footprint by up to 40 per cent compared with buildings of a standard design.



green building council australia



6 star rating

Hutchies' team of Green Star accredited professionals was involved at the beginning of the design phase, throughout construction and services commissioning process and now managing the 12-month building tuning period prior to final commissioning after a full 12 months of operation.

A comprehensive waste management plan diverted more than 80 per cent of construction waste from landfill and low VOC paint, carpet, sealants and adhesives were used throughout the building, as well as sustainable timber and a recycled content of concrete and steel.

The building has secure bicycle storage facilities, lockers and change rooms for more than 260 cyclists and a 90,000 litre rainwater storage capacity for fire system testing and irrigation.

Overall energy efficiency was modelled to achieve an estimated Five Star NABERS energy rating with more than 25 per cent peak load energy reduction.

Energy efficiency initiatives include a 1.2 megawatt Tri-Generation system, generating electrical, heating and cooling energy for building services and is effectively utilised for peak energy demand reduction.

Also relating to the building's energy reduction and management is tenancy sub-metering for effective usage monitoring and management, a DALI lighting control system to harvest natural light, measure occupancy and reduce lighting power consumption, variable speed drives on pumps and fans, solar hot water and regenerative load lifts to create energy for re-use in the building from an integral breaking control system.

The building's NABERS Energy rating is currently being managed by Hutchies' internal ESD Team, providing a total solution for developers and investors to satisfy today's sustainable objectives.

Congratulations to Hutchies' internal Green Team, Ryan Coyne, along with Fred Brand's team for their nationally acknowledged effort.

Special thanks also to Jonathan



Hutchies' project, Santos Place, has been awarded a six star Green Star office design rating by the Green Building Council of Australia.



Hutchies lap up with some recent awards. See story Page 6.

Exclusive exposé

The secret life of Paul De Jong, a mild-mannered manager from North Queensland, has been revealed. To read the full story, See Page 7.





Bird's eye view of Hutchies' site office as Airlie Beach's Muddy Bay is being transformed into the Port of Airlie – destined to be Queensland's new gateway to the Great Barrier Reef.

Port of Airlie a tropical delight

DESPITE the holiday atmosphere of tropical scenery and ocean views, Hutchies' team working on the \$500 million Port of Airlie project in the Whitsunday Passage has its eyes fixed firmly on the job at hand and a completion date for this first stage of November 2010.

With the massive marina earthworks completed, Hutchies' team moved on site in May and the first ground floor suspended deck was poured on July 3, followed by the next major element to be on site, the building's perimeter scaffold.

The project is currently running ahead of schedule and preparations are underway for the wet season at the end of the year.

There are 75 workers on site and it is planned to have the roof on by Christmas so other work areas can open up and progress during the wet.

Port of Airlie, being developed by Meridien, is destined to be Queensland's new gateway to the Barrier Reef.

When completed, Port of Airlie will have 240 marina berths, a



From left, Hutchies' Cy Milburn, Graham Spence and Evan Reid on site at the Muddy Bay Memorial.

140-bed luxury hotel, 365 one to five-storey residential apartments across eight buildings, 15 exclusive residential ocean front home blocks and 4,000m² of retail space for shops and restaurants.



Port of Airlie's first ground floor suspended deck was poured on July 3.

From the Managing Director



SINCE the last edition of the *Truth*, we have kicked off a number of significant new projects, including the \$45 million Kedron Emergency Services Centre, the \$80 million Victoria Towers Aged Care facility at Southport, the \$86 million Little Beach precinct at Paradise Point on the Gold Coast, an \$8.7 million student accommodation building complex in Canberra and a \$4.5 million refurbishment in Adelaide Street.

As well, we have won a host of smaller projects in the \$300,000 to \$4.5 million price range.

Importantly, we have secured these projects, totalling more than \$360 million, at tender, which reflects our competitiveness in the marketplace.

We have the experience, the balance sheet and the people to handle just about anything.

Interestingly, over the past 12 months our work mix has shifted from 90 per cent private and 10 per cent public to 65 per cent private and 35 per cent public.

While this is a sign of the times, we have adjusted quickly to deal with the public sector, where there is more of a focus

on administration.

Other than that, our teams are enjoying the transition and I believe the public sector project teams are enjoying the "no fuss – get the job done" culture which Hutchies brings to the table.

Despite the obviously tough economic times currently confronted by all, we continue to do what we can to keep the books topped up and our people gainfully employed.

We hope private sector funding will begin to flow again soon, allowing this sector of the marketplace to open up once more.

The government stimulus strategy has helped immensely, with a large schools package and some very promising public housing initiatives keeping various teams busy and soaking up a lot of labour, including apprentices.

While the world has changed in the past year, we have too and adapted to suit the change.

— **Greg Quinn**
Managing Director

Modern solution to aged care for patients with special need

THE public's help is being sought to furnish an aged care facility built by Hutchies in Pittsworth.

After eight months and with up to 40 workers on site, the new \$4.3 million Beauaraba Living aged care facility has been completed.

The work included renovations in a Lodge section, a new eight-room dementia secure building, a new six-bed multi-purpose wing and upgrades to kitchen and laundry.

Beaaraba Living chairman, Ken Stallman, said local residents and businesses were being encouraged to sponsor some furnishing costs.

"The building has been completed within budget, however, costs have been substantial and community financial assistance with furnishings will provide new residents with a facility the equal of anything in the region," he said.

Mr Stallman said the new building would serve two purposes.

"Firstly, it links the existing buildings to create an integrated facility which means a safer environment for staff and residents," he said.

"Secondly, it gives us a dementia secure wing to provide specialised accommodation for residents with particular needs in our community.

"We are moving away from the institutionalised style of aged care and creating facilities that are much more functional for staff and residents."

Beaaraba Living, which is currently licensed to accommodate 64 aged care residents and 22 hospital patients, has applied for government approval for 16 more residential places.

Hutchies' history in the making



NEIL Rafferty, who started with Hutchies as a 16-year-old apprentice motor mechanic in 1944, dropped in to chat with Jack and Barry Butterworth (*pictured left*) about the old days.

Neil retired from Hutchies in 1968. A youthful Neil (*pictured right*) is shown with workmates at Hutchies' former yard site in Montague Road, South Brisbane.

NB: Hutchies plans to produce a special commemorative book as part of its centenary celebrations in 2012. Any present or past company members, who have interesting or historic photographs of Hutchies' people and/or job sites, please contact Tracey Fryer at Hutchinson Builders (Tel 3335 5005 or email tfryer@hutchinsonbuilders.com.au) for possible inclusion in this publication.



Take-away trend is fast and convenient with architect designed pre-made homes

HAPPY Haus, a new company specialising in the design and creation of architecturally designed pre-made homes, has appointed Hutchinson Builders as exclusive contractor for the construction of the modular houses.

The modular homes business has partnered one of Australia's finest architects with the expertise of Hutchies to build the houses in a new factory at Yatala.

Founded by the property developer behind AM60 on Albert Street, Brisbane, Toby Lewis, Happy Haus was inspired by the belief that innovative home design can be affordable, stress-free, convenient and timely.

Happy Haus calls its home construction solution fast, green and smart.

The first range of pre-made homes for Happy Haus has been designed by Donovan Hill, the architects behind Northbridge, AM60 and many prestigious Brisbane homes.

The installation of the first home at Stradbroke Island was eventful for both Happy Haus and Hutchies – marking the start of what promises to be a fantastic partnership.

Hutchies' team leader, James Loveday, said neighbours watched in awe as



Take-away delivery to Stradbroke Island.

the house was lifted off the truck and craned onto the site overlooking kilometres of beach and national park.

"The construction methods are impressive, taking four to six weeks to produce," said James.

"The modules are quality controlled by a factory production line, ensuring the highest possible standards, while achieving considerable cost and time savings for home buyers."

Donovan Hill's co-founder, Brian Donovan,

said he was excited to be a part of the project as he was passionate about the idea and intrigued at the possibilities that modular, pre-made home design had to offer.

"The flexibility of the homes is a significant appeal of the Happy Haus range, not only in the way they can be expanded and installed, but how each home can fit into the contrasting landscapes of Australia – whether urban, rural or coastal," he said.

Premier position for Terry



Happy Haus is planning the installation of a second home at Casuarina Beach on the northern New South Wales coast.

Happy Haus founder, Toby Lewis, said these two installations marked the beginning of a busy year ahead with more than 400 enquiries since the launch of the company in May.

Mr Lewis said enquiries were geographically diverse from Brisbane to Emerald and to Dubai.

Prices for a Happy Haus start from \$105,000 ex-GST for a one-bedroom and from \$210,000 ex-GST for a three-bedroom.

Installation and delivery fees may vary, subject to location and site.

For more information visit www.happyhaus.com.au or call Clarissa Wright, Happy Haus general manager, on 1300 775 521.

TERRY Bowden, Hutchies' man on the SW1 site, stepped into the spotlight recently when he appeared with Premier Anna Bligh in an advertisement about the importance of jobs, education, health and environment to Queensland.

Premier Bligh said infrastructure was the key to keeping people in jobs.

Terry, looking deep in thought (or confused), is shown alongside Premier Bligh as they discuss construction documents.



Tuckshop for Torres Strait

ROBERT Mahony, site foreman at Thursday Island, in the Torres Strait, took this photo when a barge arrived at Horn Island from Cairns with a Hutchies' container of materials to construct and fit-out a new local school tuckshop. The client was the Roman Catholic Trust Corporation with the primary consultants being Peddle Thorp Architects. The project was a fixed price tender of \$125,000 completed in a four week timeframe.

THE Portal Hotel, described as the future of inner city accommodation in Brisbane, had its official opening recently, with rave reviews from guests on the night.

Created at 52 Astor Terrace, Spring Hill, the Portal Hotel was designed to be a four-star alternative to traditional hotel chains by providing relaxed, affordable accommodation without compromising style or service.

The development partners, Rick Bird and Dugald Woods, recognised a shortage of hotel rooms in Brisbane which was mooted to have the highest room occupancy rate of any city surveyed in the world in 2006.

They were attracted to the idea of creating an affordable, non-generic style of hotel and, after an extensive search, identified the prime Spring Hill site to develop such a facility.

The site for the Portal Hotel was contracted in late 2006 by Portal Developments, subject to development approval for an 86-room boutique hotel.

Cottee Parker Architects designed the hotel scheme and the application was submitted via Jones Flynt and Pike Town Planners.

Rave reviews for Portal opening



Smiles all round ... Georgina Woods, Lyndey Milan and Bridget Woods at the Portal Hotel official opening.

The application gained development approval from Brisbane City Council in mid 2007 and the site transaction was settled.

Simultaneously, a design and construct building contract was entered into with Hutchies which has delivered the project on time and to a high

construction standard.

Blades Project Services acted as project managers for Portal Developments.

A number of potential hotel lessees expressed interest in the proposed project prior to construction and a company associated with experienced accommodation providers, Woods Brothers, of Brisbane, was successful in securing a 15-year lease.

Rick Bird, a veteran of 28 years in agency, valuation and property development and long term Ray White Commercial franchise owner, described the opening night as "a class act".

"Everyone was extremely impressed with the night and blown away by the building and sensational bar fit-out," he said.

"I am sure the operation will be extremely successful with great management and great staff.

"Count on our ongoing support and patronage ... Good luck and we look forward to a long and very successful association together."

Wet spell fails to dampen apprentice training program

A SPELL of North Queensland style weather came to the state's South East recently and washed out most building sites with unseasonal torrential downpours.

Rather than waste precious time, many of Hutchies' Brisbane-based teams organised with the training group to give apprentices an opportunity to tackle some of their task-based training under cover at the Modular Housing complex at the Yatala yard.

The training group had organised materials and tasks in advance for such an opportunity and quickly had operations up and running for the 28 apprentices and two of our tradesmen who attended over two days. Training focused on stair construction, wet areas (certainly topical on the day), explosive power tools, scaffolding, elevated work platforms and fire wall penetrations.

Our friends at Hilti were quick to support us at short notice and provided the tools and expertise for two of the training modules.

The usual on-the-job nature of Hutchies' training ensures apprentices are as productive as possible when the sites are in full swing.

But, it is also structured into separate task modules that can be delivered to match the current site experiences of the apprentices or the weather, if necessary.

The Yatala facility is home to Hutchies' Scaffold, Modular Construc-



The Yatala facility is home to the Hutchies' Scaffold, Modular Construction and Crane and Hoist Teams. The teams (pictured on site) couldn't be happier with their new home.

tion and the Crane and Hoist Teams.

The all-weather facility, which consists of approximately 33,000m² of concrete hard stand, three workshops, a 2500m² modular construction shed and offices for each team, is regarded as one of the best of its kind enabling these teams to provide an unprecedented level of service to their clients.

The teams couldn't be happier with their new home.

RIGHT: Apprentice Max Claxton is shown here with apprentice development coordinator, Matt Taylor, going through his paces on a boom lift.



On-site apprentice training deal

A UNIQUE agreement has been forged between SkillsTech Australia and Hutchies to recognise on-site, industry relevant training.

The agreement between Hutchies and SkillsTech Australia, the lead TAFE institute for trade and technician training, is delivering training to more than 170 apprentices across six trades.

Agreement was made to restructure the block release training for Hutchies' apprentices and trainees to reflect a more task-based model with up to 80 per cent of training delivered on the job.

The deal also provides capacity for Hutchies to eventually take on up to 400 apprentices, some of whom are currently placed with sub-contractors.

The day to day welfare and skills development of the apprentices/trainees is managed by Hutchies' apprentice development coordinators (ADCs).

SkillsTech Australia business manager, Peter Beatton, said the Co-Provider Agreement had benefits for the employer and the trainer.

"We have clustered competencies and assessments based on the work that Hutchinson Builders does and mapped them back to the recognised training package

units," said Peter.

"So this is training based on skills that relate to current industry practice.

"It means we are not duplicating in the education environment skills that apprentices are already using at work and we supplement this with the theoretical content.

"Providing recognition of tasks completed in the work environment means apprentices can get qualified quicker".

SkillsTech Australia project manager, Kerry Lerch, said the number of apprentices at Hutchies had increased from 62, when on-site training commenced in March 2008, to 170 by December 2008.

He said that, as part of the agreement, specific teaching resources had been developed in partnership with Hutchies for the six trade areas covering carpentry; wall and floor tiling; plumbing; bricklaying and blocklaying; plastering; and painting and decorating.

Hutchies' training manager, Alan Waldron, said the partnership was the first time apprentice training had been delivered on this scale, with new resources, on a Queensland construction site.

"A lot of people think it's too hard and if it wasn't for our



Left to right: Hutchies' apprentice coordinator, Paul Read; SkillsTech Australia project manager, Kerry Lerch; and Hutchies' training manager, Alan Waldron.

strong relationship with SkillsTech Australia this wouldn't have happened," he said.

Hutchies' apprentices, Matt Hanna and Scott Borghardt, said the program made their working lives easier.

"There's an apprentice coordinator, Paul, who comes to the site and you can ask questions. We get a lot of help on and off the site," said Matt.

"Hutchies is a family oriented company and they invest in their apprentices. The training is really

hands-on and we get to do everything."

Apprentice coordinator, Paul Read, said Hutchies believed in training apprentices to "do the task on site" with the aim of creating future leaders for the company.

"It's about real life experience," he said.

Paul said the new training package had been hard work but it was worth it.

"We are gaining a lot of productivity with our apprentices due to on-site training," he said.



Young achiever

JOCCOAA Lavell, a school-based trainee with Hutchies in Toowoomba, is a young achiever, winning the Noel Williamson Encouragement Award given at the recent annual awards of The Apprenticeship Company.

Joccooa, shown here with Robert Weymouth, works at Hutchies one day a week and is in Grade 11 at St Joseph's College.

Plum performance recognised by Pacific

NOT only are Hutchies' apprentices important to our teams, but they are also vital to our key subcontractors, such as Pacific Plumbing based on the Sunshine Coast.

Pacific Plumbing recently recognised the key performers in its team of 12 apprentice plumbers with its inaugural Apprentice of the Year Awards.

Congratulations to Rick Wilson and Matt Power for winning the Apprentice of the Year and Encouragement Awards, respectively.

All apprentices put in top efforts on site and with their studies, making it a tight call for the final decision.

Pacific Plumbing has had an office in Queensland since 1992 and is looking to expand into North Queensland and the Northern Territory.

The company's principal, Bill McFarlane, commented recently about the impact of the Hutchies' training program on his business.

"Our involvement with Hutchies led us to reading the Truth and it was there that I came across the article on the Hutchies' apprentices' training model," said Bill.

"Introducing our young fellows to the industry by this method has been nothing short of remarkable.

"Supported by two very dedicated individuals in Mark Serrurier and Alan Waldron, the process has been smooth sailing.

"The effort by our staff is far higher but the trade-off is plain to see on site.

"This system leaves nothing to chance when it comes



Congratulations to Rick Wilson and Matt Power for winning the Apprentice of the Year and Encouragement Awards, respectively, seen pictured receiving their fishing tackle prizes from Bill McFarlane (left) and Noel Ryan.

to the apprentices' ability to carry out their profession down the track and you can truly vouch for this on completion of their training.

"This, in my opinion, is the very best training available and will only benefit all involved," he said.

Hutchies' apprentices are currently working with many of our key subbies including GTS Plumbing, PJT Tiling, Higgins Coatings, Brisbane Formwork, WFM Electrical Services, Bullseye Roofing and Q Electrical.

Old house for Youngcare



Hutchies has joined forces with the CFMEU and other contractors and suppliers to create a home for the Youngcare charity for free.

EARLIER this year, Hutchies was invited by the CFMEU to help create a home for Youngcare, a charity whose mission is to provide a dignified and relevant lifestyle for young people requiring nursing care.

Executive director, Nick Bonifant, said Youngcare had purchased a 1920s home in St Pauls Terrace, Spring Hill, Brisbane, to be renovated for charity work and estimated it would cost \$300,000 to raise the house, renovate it and add office space.

Since then, Hutchies and other contractors and suppliers have joined the CFMEU – construction

workers union – to do the job for free.

This will enable Youngcare to channel its modest financial resources directly into doing good work for young Australians with high-care needs.

Youngcare is working closely with the Brisbane City Council to retain the original character of the home.

Hutchies' Ben Howard and Tim Ferguson have been coordinating works to restore the Spring Hill residence to its former glory and create much-needed premises for this worthy charity.



Hutchies' team at the AIB Awards night.

Team skills win awards

HUTCHIES had some great team results at the recent **Australian Institute of Building Awards**.

O'Reilly's Conference Centre won the Professional Excellence Award in the Commercial \$2.5 - \$10 million range with Heron Island being Highly Commended in the same category.

Paul De Jong received high commendation for the Cairns Tree Top Walk and the John Berlese team picked up three high commendation awards for 545 Queen Street, Springfield Tower Office and 53 Albert Street.

At the **Brisbane Regional Architecture Awards**, Scott presented prizes on behalf of the State Sponsor, Hutchinson Builders.

Residential Architecture Multiple Housing Regional Commendations were awarded to Gall & Medek Architects for Lady Bowen Stage Three Studio Units; Cox Rayner Architects for Youngcare; Gall & Medek Architects for Key Street Townhouses; and Cox Rayner Architects for Norman Reach.

The evening had an interesting atmosphere with the theme being "70s at the Drive-In".

At the Brisbane Regional Architecture Awards dressed in the "70s at the Drive-in" theme were (L-R): Justin O'Neill (2009 Awards Jury Director); Eloise Atkinson (2009 Brisbane Jury Chair); Scott Hutchinson; Jim Gall (Gall & Medek Architects Pty Ltd) Bruce Medek (Queensland Chapter President); Paul Matthew (Gall & Medek Architects Pty Ltd). Scott remembers his Mum being at the drive-in in her gold dressing gown.



Roosters born to be wild

SITE managers get paid to deal with problems, but Dave Wallace, site manager at the Murrumba Downs Tavern project, was stumped when four roosters turned up at work one morning.

Dave said he has had a few 'roosters' on the job before – but these were real ones with feathers and loud crows.

"We went around the area to ask if anyone owned them, but I think they had been dumped, because no one would keep four roosters," said Dave. "They were there at 6am one morning when we turned the spotlights on to start work. The four of them were sitting on a pallet of bricks.

"The brickies labourer fed them and every morning when the site fired up all you could hear was the cock-a-doodle-does."

One rooster was put down when it attacked a council worker who



These four roosters had plenty to crow about when they moved onto Hutchies' Murrumba Downs Tavern construction site.

tried to trap it but another fared better when a local resident caught it and sent it off to a farm out Toowoomba way.

The other two chooks eluded capture, despite numerous attempts to catch them.

They even made headlines in the local newspaper and had a segment on radio 4BC about how they lived on a Hutchinson Builders construction site, roosted in the scaffold and were being looked after by the workers.

Letter to the Editor

I WOULD like to extend a word of thanks to your team currently working on the building site at the corner of Queen & Macrossan Streets in Brisbane.

I was in the unfortunate position of blowing the radiator in my car in the middle of Queen Street.

The traffic control gentlemen came to my immediate assistance to get the car off the road and ensure my safety.

Throughout the many hours I waited for RACQ, a number of your team offered assistance and kind words of support – one even watched my car so that I could get a drink!

The silicon and hose 'Fraser Island fix' did the job and I am now safely and happily back on the Gold Coast with my car being repaired.

I greatly appreciate the assistance I was shown and I intend to spread the word of the courtesy of the Hutchinson team.

I would be grateful if you would pass on my thanks to the wonderful people at the job site.

Kindest regards from a grateful driver.
– Allison O'Leary



Paul, doing a Janet Jackson at the cheque hand-over, is shown with the hard-earned \$2000 for the Make A Wish Foundation being accepted by Danny Moore. Paul revealed he also has a nice little Cat Woman number in his wardrobe which could get an outing next year.

Secret life of a super hero

PAUL De Jong's secret is out.

It's not that he likes to dress in women's clothes – that's no secret – but he is an habitual fundraiser who can't help himself from collecting money for good causes.

Recently, Paul volunteered for 'I Wish My Boss Was' Day.

As a participant, Paul was required to dress as the person chosen by his staff for an entire day.

Hutchies' Cairns staff voted for Paul to dress as Wonder Woman and he travelled around the CBD on a double-decker bus with other super heroes and celebrities raising funds for the Make A Wish Foundation for sick children.

Organisers estimated the 'I Wish My Boss Was' day raised \$20,000 and

Hutchies raised a fantastic \$2000.

The following generous consultants and subcontractors donated: GPS Painting; MGF Consultants (NQ); Cairns Earthworks; Gilboy Hydraulic Solutions; Lincolne Scott Consulting Engineers; BE Air Conditioning; All Construction Approvals; Robert Weymouth; Neil McAlloon Plumbing & Roofing; Power Graham & Dempsey; Bradnams Windows & Doors (Cairns); Shane Watson; and Hutchies' Cairns staff.

All About You Spa and Skin Clinic donated a full body spray tan which added the final touches to Wonder Woman.

Paul sends a huge "thank you" to Jodie Gregory whose hard work contributed to the success of the day.



Shaved for a Cure

SAM Williams, an apprentice sparky with Hutchies, got involved with Shave for a Cure and raised \$770, with Hutchies contributing \$500.

Stephen Pink, Development Manager, Consolidated Properties Group, and his son, James both shaved their locks again this year



and thanked all those who made donations with \$4000 raised.

Photos show Sam – before and after the shave.



Relay for Life hammers cancer

HUTCHIES was a major sponsor for the annual Relay for Life held at the Toowoomba Showgrounds to raise funds for cancer research and treatment.

To raise the funds, groups running in relay passed batons (in Hutchies' case... a hammer) from 3pm Saturday until 9am Sunday.

Runners recorded personal laps and group laps.

Craig Gooderham's son, Tye, did 45 laps and Hutchies' group did 147 continuous laps.

For those not walking or running, a luxurious tent provided a lounge, chairs, food and refreshments.

Three of Hutchies' people, Peter Lee, Brett Washington and Ray English, stayed awake all night.

Peter Lee and Craig Gooderham organised the event which raised \$100,000.



Tweed goes to the Outback

THE Noosa Sanctuary team from Tweed went to the Gold Coast for the weekend recently. They went

to the Outback Spectacular on the Saturday night and stayed overnight at the Holiday Inn.

ATODS

Job Value: \$1.1M

Description: Refurbishment of the ATODS Clinical Hub and Withdrawal Centre and construction of a new School of Oral Health Records Facility for Queensland Health.

Team leader: Jim Gutteridge
 Hutchies' Cost Planner: Steve Wicks
 Hutchies' Administrator: Pierre Kessler
 Hutchies' Supervisor: Nathan James
 Client: Queensland Health
 Civil Engineering Firm: Glynn Tucker Consulting Engineers
 Architect Firm: Jon Kuskopf & Associates
 Electrical Firm: Ashburner Francis

GROVELY STATE SCHOOL

Job Value: \$1,686,940

Description: Construction of a new multipurpose hall for the performing arts to be located adjacent the existing pool and tennis court facilities at the school. Construction includes steel portal framing with feature cladding to entry and a permanent stage for both school and community use.

Hutchies' Project Manager: Lyndon Watson
 Hutchies' Foreman: Russell Glass
 Hutchies' Cost Planner: Robert Rea
 Architect Firm: Linear 56 Design
 Struct, Elect & Civil Engineering: ADGCE
 Quantity Surveyor: Rider Levett Buchnall

WATSON ROAD STATE SCHOOL

Job Value: \$1,700,547

Description: Construction of a new multi-purpose hall.

Hutchies' Project Manager: Lyndon Watson
 Hutchies' Foreman: Ben Plunkett
 Hutchies' Cost Planner: Robert Rea
 Architect Firm: McVeigh Consulting
 Struct & Civil Engineering Firm: McVeigh Consulting
 Quantity Surveyor: Rider Levett Buchnall
 Electrical Firm: ADGCE

BULCOCK BEACH ESPLANADE REDEVELOPMENT

Job Value: \$6,434,000

Description: The Bulcock Beach Redevelopment project improvements include: upgraded boardwalk and revetment wall infrastructure; installation of more facilities for family orientated activities; upgraded toilet and shower facilities; upgraded footpaths along the Esplanade; integrated pedestrian crossing points; conservation of the existing Norfolk Pine trees and planting of new street trees; new street furniture including picnic tables, seating, rubbish bins, street lights and bicycle racks; and art work that reflects local themes such as the marine environment and history of Bulcock Beach.

Hutchies' Project Manager: Noel Ryan
 Hutchies' Foreman: Scott Elmslie
 Hutchies' Cost Planner: Michael Michell
 Architect Firm: Core Architecture
 Structural Engineering Firm: Tod Consulting
 Quantity Surveyor: Graham Lukins
 Partnership Pty Ltd
 Electrical Firm: Webb Australia
 Landscape Architect: Place Planning & Design



ANU Student Accommodation.

JOBS UPDATE with Barry Butterworth

ANU STUDENT ACCOMMODATION

Job Value: \$8.6M

Description: The ANU (Australian National University) Modular Student Accommodation Project in Canberra is an innovative project utilising shipping containers as the base module. The project is staged with a commitment from the ANU for the first 70 beds comprising of 83 modules, plus conventionally built common areas and plant areas. The facility is spread over six floors. The modularised solution allows a rapid delivery and completion timetable enabling the facility to be completed for the 2010 student intake year. Hutchinson QSH and ANU worked closely to develop the required brief and design for acceptance and approval within a tight two-month time frame.

Hutchies' Design Manager: Mario Hadjia
 Hutchies' Project Manager: Martin Sharp
 Hutchies' Administrator: David Zhao
 Hutchies' Site Manager: Andrew Gulliford
 Hutchies' Cost Planner: Steven Brown
 Architect Firm: Architectus
 Structural Engineering Firm: BGE Consulting Engineers
 Fire Safety Engineers: Body Cote Warrington Fire
 Services Design Firm: BSE (Building Services Engineers)
 Planner, BCA & Principal Certifier: City Plan Services
 Module Supplier: Quicksmart Homes

HOSTEL, RASMUSSEN

Job Value: \$3,572,851

Description: New 40-bed hostel with a two-level manager's residence, five buildings with covered walkways and all with a 30-week construction period.

Hutchies' Team Leader: Jim Gutteridge
 Hutchies' Administrator: Stefan Oosthuysen
 Hutchies' Site Manager: Graham Laggan
 Hutchies' Estimator: Brendan Kavanagh
 Client: Aboriginal Hostel Ltd
 Architect Firm: Jon Kuskopf & Associates
 Struct & Civil Engineering Firm: Glynn Tucker Consulting Engineers
 Hydraulics Firm: CMRP
 Mechanical Firm: MGF
 Electrical Firm: Ashburner & Francis - MGF

RIVERWAY SKATE PARK, TOWNSVILLE

Job Value: \$783,787

Description: Design and construction of Pioneer Park skate park and gardens.

Hutchies' Team Leader: Jim Gutteridge
 Hutchies' Administrator: Mike Mitchell
 Hutchies' Site Manager: Graham Laggan
 Hutchies' Cost Planner: Alex Long
 Client: Townsville City Council
 Architect Firm: Tippet Schrock
 Skate park Design Firm: SK8 Scapes

PORT OF GLADSTONE

Job Value: \$182,326

Description: Structural steel framed metal clad extension to the painter's workshop at the R. G. Tanna Coal Terminal for the Gladstone Port Corporation.

Hutchies' Team Leader: Robert Weymouth
 Hutchies' Administrator: Matt Nielsen
 Hutchies' Site Manager: Gary Turner
 Hutchies' Cost Planner: Ben Adams
 Structural Engineering Firm: Frost Engineers

SCOTT STREET APARTMENTS

Job Value: \$41.4M

Description: Consists of 12 'high-spec' apartments and two 'high-spec' townhouses including two levels of basement car parking.

Hutchies' Project Manager: Harry White
 Hutchies' Administrator: Jeremy McKenzie
 Hutchies' Foreman: Andrew Douglass
 Hutchies' Supervisor: Dragan Golubovic
 Hutchies' Cost Planner: Steve Wicks
 Architect Firm: CNN (Tower) and Riddel Architecture (Silverwells)
 Struct & Civil Engineering Firm: ADG
 Electrical Firm: Q Electrical

NORTH BLOCK, TOWNSVILLE HOSPITAL

Job Value: \$931,432

Description: Early works civil and concrete package for Townsville Hospital.

Hutchies' Team Leader: Jim Gutteridge
 Hutchies' Administrator: Pierre Kessler
 Hutchies' Site Manager: Noel O'Brien
 Client: Queensland Health

UNIVERSITY OF QLD

Job Value: \$21.6M

Description: Complete refurbishment of the UQ Health Science Building at the Royal Brisbane Women's Hospital, Herston.

Hutchies' Project Manager: Rob Yates
 Hutchies' Administrator: Lindsay Low
 Hutchies' Foreman: Scott Macgregor
 Hutchies' Supervisor: Grant Delaney
 Architect Firm: Phillips Smith & Conwell
 Structural Engineering Firm: Cardno Alexander Brown
 Electrical Firm: Heyday Group Pty Ltd

BUSHLAND BEACH SHOPPING CENTRE

Job Value: \$3,113,000

Description: Construction of a new shopping centre comprising of a 500m² IGA and 500m² of retail outlets. The scope of work includes civil, hard and soft landscaping.

Hutchies' Team Leader: Jim Gutteridge
 Hutchies' Administrator: Dave Christoffersen
 Hutchies' Foreman: Noel O'Brien
 Hutchies' Cost Planner: Brendan Kavanagh
 Client: Sunland Group
 Architect Firm: Thomson Adsett
 Civil Engineering Firm: Nth Consulting Engineers
 Structural Engineering Firm: Robert Bird Group
 Hydraulics Firm: BRW Enterprises
 Electrical Firm: BCA Consultants



Scott Street Apartments on the rise

NORTH STATE PRESCHOOL

Job Value: \$1.2M

Description: Refurbishment of existing North State Preschool to a modern early childcare centre including off street parking.

Hutchies' Administrator: Shaun Spry
 Hutchies' Foreman: John Kings
 Hutchies' Cost Planner: Ben Adams
 Architect Firm: Mark Williams Architect

BALD HILLS STATE SCHOOL

Job Value: \$2.4M

Description: Construction of a new multi-purpose sports hall and extension to existing library.

Hutchies' Project Manager: Michael White
 Hutchies' Foreman: Ian Partridge
 Hutchies' Cost Planner: Trevor Bruiners
 Architect Firm: Buchan Group
 Struct & Civil Engineering Firm: McVeigh Consulting Group
 Electrical Firm: Alliance Design Group

SOUTHBANK - RIVERSIDE GREEN

Job Value: \$1,191,845

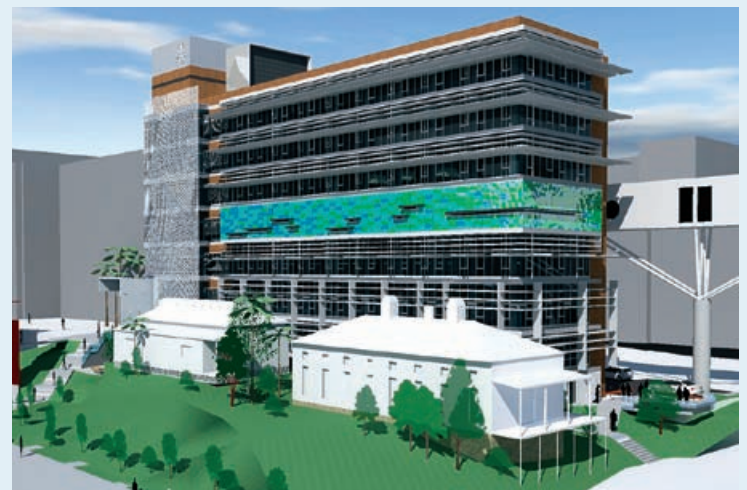
Description: Landscaping upgrades incorporating new toilet block, new BBQ and picnic structures, new planting and landscape elements including demolition of existing toilet block and picnic area.

Hutchies' Project Manager: Brent Nowland
 Hutchies' Supervisor: Mike Tickner
 Hutchies' Cost Planner: Brent Nowland
 Client: Southbank Corporation

ANN STREET

Job Value: \$4.5M

Description: Hutchies was commissioned by ING Real Estate to carry out facade modernisation, restoration and cleaning works on this inner city high-rise building. The project requires a combination of specialised metal climbers and access equipment to ensure



University of Queensland's Health Science Building, Herston.



Ewingsdale Substation.

DELANEY'S CREEK STATE SCHOOL

Job Value: \$2M

Description: Construction of a new resource centre and undercover area as part of the BER (Building the Education Revolution) stimulus package. BER is the \$14.7 billion national investment from the Commonwealth to improve the quality of facilities in Australian schools. The design for this project is simplified to blend in with existing buildings. Extensive undercover walkways will be built to join the two buildings.

Hutchies' Project Manager: . . . Mick Crocker
Hutchies' Administrator: . . . Seth Dunn
Hutchies' Foreman: . . . Chris Stradford-Smith
Architect Firm: . . . McVeigh Consultants
Structural Engineering Firm: . . . McVeigh Consultants
Electrical Firm: . . . ADG Consulting

AEIOU – GRIFFITH UNIVERSITY

Job Value: \$1,654,972

Description: This new centre is located on the Griffith University Nathan Campus and is the first purpose-built AEIOU facility. AEIOU – for children with autism – is a not-for-profit organisation dedicated to providing a professional, full-time early educational program of the highest quality for children with Autism Spectrum Disorders (ASDs).

Hutchies' Project Manager: . . . Tomas Wilson
Architect Firm: . . . The Buchan Group
Struct & Civil Engineering Firm: Farr Engineering

BI-LO NORTH SHORE

Job Value: \$400,000

Description: Prototype for the proposed refurbishment of Coles' stores nation-wide introducing new lay-out, colour scheme and produce offerings, including 'on display' butchery and fresh produce ice tables. The project was carried out in a compressed program within the operating store and completed ahead of schedule.

Coles Project Manager: . . . Calvin Trigg
Hutchies' Administrator: . . . Hamish Evans
Hutchies' Foreman (Night): . . . Steve Ferguson
Hutchies' Foreman (Day): . . . Russell Glass
Hutchies' Cost Planner: . . . Stephen Wilson
Architect Firm: . . . Suters Architects
Quantity Surveyor: . . . Phil Kelly, Turner Townsend
Hydraulic Firm: . . . Aqualogical

DALKIA SERVICES OFFICE AND WAREHOUSE

Job Value: \$3,322,722

Description: Design and construction of a new office and warehouse for Dalkia at the new Springfield Technology Park. Ceccato Hall has produced a design featuring exposed services and green building initiatives to make this a benchmark and the first in the new Park developed by Springfield Land Corporation and managed by Michael Kent.

Client Project Manager: . . . David Valentine
Hutchies' Project Manager: . . . Rob Diamond
Hutchies' Foreman: . . . Shane Tyson
Architect Firm: . . . Ceccato Hall
Struct & Civil Engineering Firm: ADG
Electrical Firm: . . . Stuart Consulting
Hydraulic Consultant: . . . ADG

SHORNLIFFE STATE SCHOOL

Job Value: \$1,557,198

Description: Construction of a new two-storey resource centre (library) with an assembly area underneath as well as a street level walkway connecting the existing administration office and the new resource centre.

Hutchies' Project Manager: . . . Bree Hoek
Hutchies' Cadet Administrator: . . . Jai Sesserago
Hutchies' Foreman: . . . Daniel Buckley
Hutchies' Cost Planner: . . . Bob Walker
Architect Firm: . . . Conrad Gargett
Struct & Elect Engineering Firm: ADG Engineers

ANIMAL POD BUILDING

Job Value: \$260,000

Description: New 12-bed animal pod for the Toowoomba Regional Council.

Hutchies' Project Manager: . . . Craig Gooderham
Hutchies' Foreman: . . . Daniel Huth
Hutchies' Cost Planner: . . . Ben Adams
Architect: . . . Toowoomba Regional Council
Structural Engineering: . . . Toowoomba Regional Council
Quantity Surveyor: . . . Toowoomba Regional Council

TAIGUM STATE SCHOOL

Job Value: \$2,152,395

Description: Construction of a new multi-purpose hall to be located at the front of the school as well as a new resource centre (library).

Hutchies' Project Manager: . . . Bree Hoek
Hutchies' Cadet Administrator: . . . Jai Sesserago
Hutchies' Foreman: . . . Hugh Creedy
Architect Firm: . . . Conrad Gargett
Struct & Elect Engineering Firm: ADG Engineers

EWINGSDALE SUBSTATION

Job Value: \$960,000

Description: The building is split level slab on ground with basement that is to house all 11kva switching and control equipment. The building also requires capabilities to resist the explosive failure of the equipment contained within. The flooring to the 11kva switchboard room was cured to 90mpa at a tolerance of +0- 2mm over 5m.

Hutchies' Team Leader: . . . Paul Hart
Hutchies' Project Manager: . . . Lindsay Low
Hutchies' Administrator: . . . Daniel Chittick

FRASER COAST ANGLICAN SCHOOL

Job Value: \$2,418,000

Description: Construction of a new two-storey resource centre (library).

Hutchies' Project Manager: . . . Dave Smythe
Hutchies' Administrator: . . . Dave Smythe
Hutchies' Foreman: . . . Scott Elmslie
Hutchies' Cost Planner: . . . Mike Michell
Architect Firm: . . . Parrups Waring Architecture
Structural Engineering Firm: . . . VDM Consulting – Barlow Greg
Electrical and Mechanical Firm: McCutcheon MacDonald
Hydraulic: . . . Water Wise Design

absolute safety for both the public and workers. Particularly complex access issues over high level glass atriums and public walkways have been resolved in conjunction with Hutchies' own scaffold team. The end result will reveal the old precast concrete façade being clad with state-of-the-art Alpollic cladding providing a face lift for the building.

Hutchies' Project Manager: . . . Alex Seydel
Hutchies' Administrator: . . . Jon-Paul Floyd
Hutchies' Foreman: . . . Peter Gordon
Architect Firm: . . . Woods Bagot

GATTON IGA

Job Value: \$2.2M

Description: Extension of existing IGA store and the construction of seven specialty shops. Overall construction area is approximately 1500m². Project is due for completion in November 2009 and is currently ahead of schedule.

Hutchies' Project Manager: . . . Peter Lee
Hutchies' Administrator: . . . Peter Lee
Hutchies' Foreman: . . . Damien Hall
Hutchies' Cost Planner: . . . Ben Adams

ENOGGERA STATE SCHOOL

Job Value: \$2,152,395

Description: Construction of a new architecturally designed resource centre (library), representing a departure from standard department school buildings to give a contemporary feel, yet complementing the existing school buildings by incorporating some of their heritage design elements.

Hutchies' Team Leader: . . . James Loveday
Hutchies' Cadet Administrator: . . . Mark Stanley
Hutchies' Site Manager: . . . Rick Kap
Hutchies' Cost Planner: . . . James Loveday
Architect Firm: . . . The Buchan Group
Struct & Civil Engineering Firm: McVeigh Consultants
Quantity Surveyor Firm: . . . Rider Levett Bucknall
Electrical Firm: . . . ADG Engineers (Aust) Pty Ltd

Building Certifier: . . . Bartley Burns
Hydraulics Firm: . . . McVeigh Consultants

TYTO WETLANDS INGHAM – STAGE 2

Job Value: \$3.1M

Description: Civil, hard and soft landscaping package including roads, car parking, architectural concrete, footpaths, S/W and electrical. This project will further enhance Tyto Stage 1, currently under constructions by Hutchies.

Hutchies' Team Leader: . . . Jim Gutteridge
Hutchies' Administrator: . . . Mike Mitchell
Hutchies' Foreman: . . . Pat Derrick
Hutchies' Cost Planner: . . . Mike Mitchell
Client: . . . Hinchinbrook Shire Council

Civil Engineering Firm: . . . AECOM
Design Firm: . . . Conics Townsville
Landscaping Firm: . . . Conics Townsville
Electrical Firm: . . . Ashburner & Francis



Tyto Wetlands.

PIZZEY PARK SKATE PARK

Job Value: \$905,000

Description: Construction of new beginners and intermediate bowls and extensions to the existing sk8 park with associated landscaping at the Pizzezy Park Youth Precinct, in Miami, Gold Coast. Locals will be amping to get back onto the new expanded bowls and it will be worth the wait.

Hutchies' Project Manager: . . . Rob Diamond
Hutchies' Administrator: . . . Lynden Watson
Hutchies' Foreman: . . . Steve Giosserano
Architect Firm: . . . Complete Urban
Struct & Civil Engineering Firm: Complete Urban
Electrical and Hydraulic Firm: . . . Complete Urban

GEEBUNG SPECIAL SCHOOL

Job Value: \$850,000

Description: Extension to existing resource centre. This will be a modular construction built off site at our Yatala Yard.

Hutchies' Project Manager: . . . James Loveday
Hutchies' Administrator: . . . Andrew Rijken
Architect Firm: . . . Linea 56 Design
Structural Engineering Firm: . . . ADG Consultants
Electrical Firm: . . . ADG Consulting

VICTORIA TOWERS –

Early Works

Job Value: \$2.6M

Description: Early works package consisting of a retention system which will accommodate three levels of basement. The design is a combination of bored piers, sheet piling and rock anchors. The early works were completed in late April.

Hutchies' Project Manager: . . . John Berlese
Hutchies' Administrator: . . . Andoni Kalokerinos
Hutchies' Site Manager: . . . Terry Bowden
Hutchies' Cost Planner: . . . Paul David
Structural Engineering Firm: . . . Alliance Design Group
Quantity Surveyor Firm: . . . Rider Levett Bucknall

VICTORIA TOWERS – Tower

Job Value: \$82M

Description: Construction of a 35-level high-rise tower consisting of three levels of basement, four levels of aged care from L1 to L5 and residential units from L6 to L35 levels. The tower is located on the corner of Scarborough and White Street, Southport, off the back of the existing Southport RSL Club.

Hutchies' Project Manager: . . . John Berlese
Hutchies' Administrator: . . . Nathan Burden & Andoni Kalokerinos
Hutchies' Site Manager: . . . Terry Bowden
Hutchies' Cost Planner: . . . Paul David
Structural Engineering Firm: . . . Alliance Design Group
Quantity Surveyor Firm: . . . Rider Levett Bucknall

LITTLE BEACH

Job Value: \$86M

Description: Little Beach, at Paradise Point, is a residential development comprising five free-standing apartment buildings which include 131 luxury apartments, commercial space and landscaped recreational areas to suit. The development is located on the last undeveloped peninsula in Paradise Point, on the Gold Coast, with 360° ocean views.

Hutchies' Project Manager: . . . Alex Seydel
Hutchies' Administrators: . . . Brett Smith & Levi Corby
Hutchies' Foreman: . . . Darren Lovell
Hutchies' Supervisor: . . . Barry Bowers
Hutchies' Cost Planner: . . . Michael Crossin
Architect Firm: . . . EJE Architecture
Civil Engineering Firm: . . . Hyder
Structural Engineering Firm: . . . Burchill VDM
Quantity Surveyor Firm: . . . Davis Langdon
Electrical Firm: . . . EMF



Little Beach Development.



Dean White, Brett Wilkie, Janet Shaw, Anthony Prior at Helensvale.

HUTCHIES' Dean White and Anthony Prior were joined by Janet Shaw, Project Leaders, to compete in the recent Helensvale Bowls Club members' day sponsored by Hutchies on the Gold Coast. Despite tips from the current Australian Open Men's Single Champion, the Hutchies' team had their pants beaten off them (as picture shows). But, as a consolation prize, they won a place in the Travelling Undies line-up this edition. More than 130 players took part in the event which included two games of 11 ends followed by lunch.



TRAVELLING UNDIES

BREE Hoek and her dad, Stephen, donned their Hutchies' outfits to invade an enemy project by Leighton's in Macau, China. Here they are on top of the Grand Hyatt Hotel in the middle of the \$3 billion City of Dreams Casino in Macau.



Blue and white Hutchies' undies replaced the traditional Aussie khaki uniform for Dave Warner when he walked the Kokoda Trail.



HUTCHIES' clients at Clifford Gardens Shopping Centre were delighted to receive their Christmas hamper from Robert Weymouth and his team in Toowoomba ... and it didn't take them long to get into the festive spirit.

Shown in party mode are Management Team Emily Howard (left), Judy Earnst (back), Melissa Anderson (right), with Laura Sullivan (front).

The girls left the the wrapping paper, bow and card for John Krause – saying that's what he deserved for taking leave at that time of year.



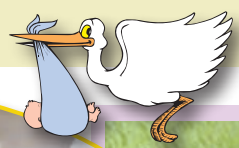
LEFT: A Hutchies' team was the latest force to invade the Kokoda Trail in PNG with the group photographed at the end of the track after five days' walking. From left to right, Michael Nowak, Matthew White, Glenn Russell, Richard Garland, Ben Young, Ben Churven, John Corry, and Marty Colyer.

HATCHED & MATCHED



HUTCHIES' receptionist at Toowoomba, Kate Peters, gave birth to her daughter, Mia, while she was on holidays at Kirra on the Gold Coast.

Despite the nearest hospital at Tweed Heads, Kate chose to drive to the Gold Coast Hospital in Southport, so Mia would be born a Queenslanders ... and supporter for the local State of Origin team.



ALAN Hoult, Hutchies' Site Manager, Noosaville, is tickled pink with his new great-grandson, Kaden, born to his granddaughter, Nardia, and partner, Mike.

Alan says the original name, Cadin, was changed after he warned he could be a cad or make a lot of din.

Regardless of his name, Alan reckons Kaden is cute enough to be a new generation site manager.



Yasmin Eve-Maree Wilson



A very proud Ellianah, 3½, cuddles her cute, little sister, Zahli.



Kate and Ryan Coyne recently celebrated their wedding at the Crowne Plaza, Surfers Paradise, on the Gold Coast.

GARRY and Bonnie Royle, part of the *Hutchies' Truth* production team, were eagerly anticipating the arrival of two grandchildren recently, with both due on May 15.

One arrived four days early, with the appearance of Zahli Ava Tongia-Royle, little sister to Ellianah.

The other bundle of joy arrived four days after the due date with the birth of Yasmin Eve-Maree Wilson, the first-born for Hayley and husband Glenn, who live in Mackay.

The family is now celebrating with three 'Royle-princess' granddaughters.



RIGHT: For Owen Valmadre and Mandy Walker, a new baby boy, William Reilly Valmadre, born on May 29th.

HUTCHIES' TRUTH

Phantom of the racetrack



THE Social Club attended a Phantom Races Day at the Gold Coast recently.

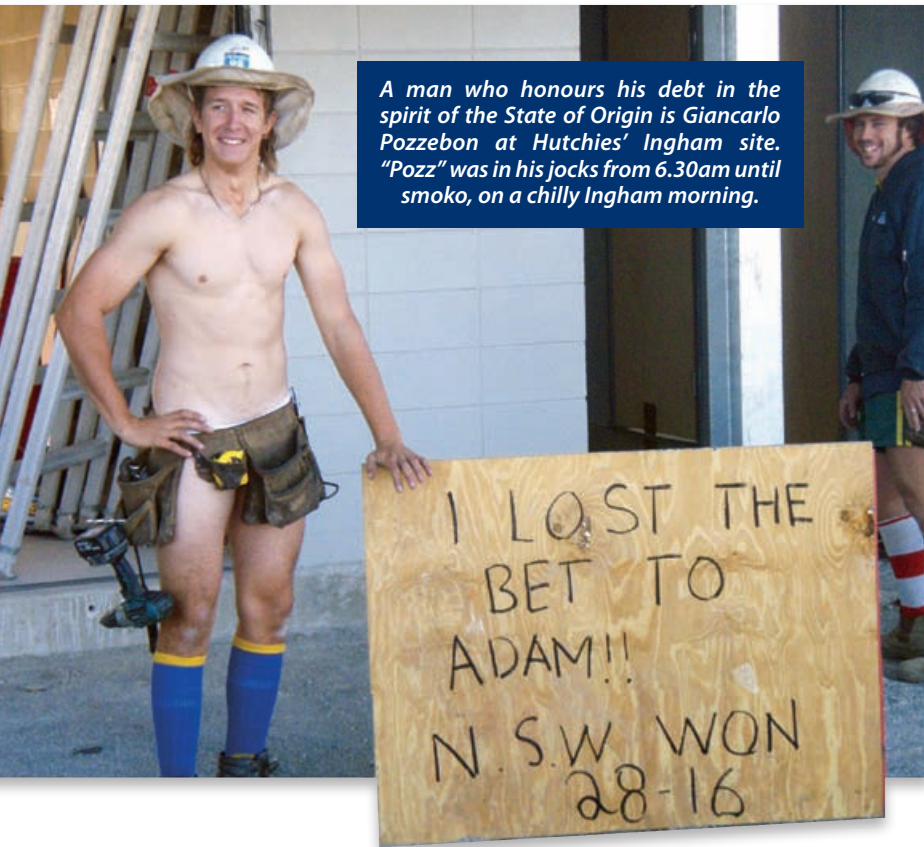
Rain had washed out the local horses, but everyone still had a good time – eating, drinking and betting on races at other venues with great viewing on the big screen.

Fashion on the Turf was still a goer with Best Dressed being Jack Elms (left) shown with Damien O'Brien.



Two girls in a boat

RAIN and wind did not dampen the spirits of the '2 Girls in a Boat', Claudia Mearns and Eleanor Wilson, when they set off on a four-day rowing adventure to raise money for AEIOU, children with autism. The girls were sponsored by Hutchies and raised more than \$15,000 through sponsorship from family, friends and people keen to support AEIOU.



A man who honours his debt in the spirit of the State of Origin is Giancarlo Pozzebon at Hutchies' Ingham site. "Pozz" was in his jocks from 6.30am until smoko, on a chilly Ingham morning.



Pittsworth Powers on ... HUTCHIES is a sponsor of the Pittsworth Power – the Pittsworth Bowls Club in the state championship bowls competition.

Hutchies' projects in Pittsworth include the \$4 million Pittsworth Hospital project, the Pittsworth IGA and the Pittsworth State School Community Centre.

Pictured with the team is Hutchies' Robert Weymouth (top left) and Danny Charlesworth (top right).

BROOKE Kelly and her friend Trish Doughan from Rockhampton were selected to play for Queensland in the Under 16s softball side in the National Championships in Perth.

Brooke's dad, Al, and Trish's mum, Sandra, both made the trip to Perth to watch their daughters play.

The Queensland team did well, coming second to New South Wales.

After the championship, Trish received a bonus when she was selected to play in the Australian squad.

Al and Sandra are both proud of their daughters' achievements.



National champions

Brooke, Al, Trish and Sandra at the National Softball Championships in Perth.



Ride of a lifetime

JACK and his bkie mates turned up at the Lou Sorensen Golf Day to add more excitement to the fundraiser for the Mater Hospital Foundation and to give rides to young patients from the hospital.

Brisbane Lions were there also and were envious of the kids who had the bike rides.

SCRATCH-ITS

IF your Hutchies' Scratchie matches the lucky numbers listed you are a winner! To claim your prize telephone Hutchies on (07) 3335 5000.

Prizes compliments of Hutchinson Builders.

No.	Prize
65408	Hutchies' T-Shirt
65429	Hutchies' Undies
65500	Tape measure
65816	Hand Sander
65999	Hutchies' Cap
66344	Jack's Tequila
66570	Paint brush set
66753	Hutchies' T-Shirt

No.	Prize
66851	Screw Driver Set
66987	Drill Bit Set
67000	Hutchies' Undies
67102	Chalk Line
67625	Jack's Tequila
67888	Paint brush set
67914	Hutchies' T-Shirt
68006	Jack's Tequila
68469	Hutchies' G-string

No.	Prize
68501	Screw Driver Set
68686	Hutchies' Undies
68778	Jack's Tequila
68833	Tape measure
68900	Hutchies' Cap
69212	Jack's Tequila
69357	Hutchies' T-Shirt
69384	Hutchies' Undies